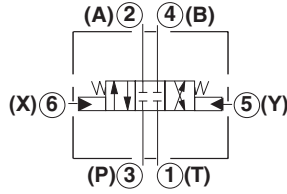
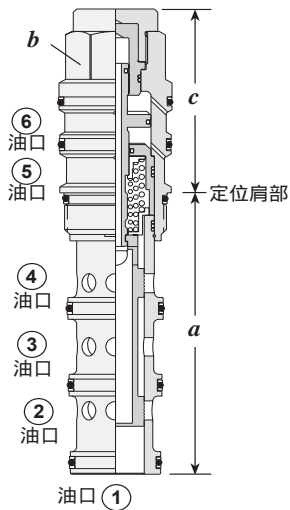


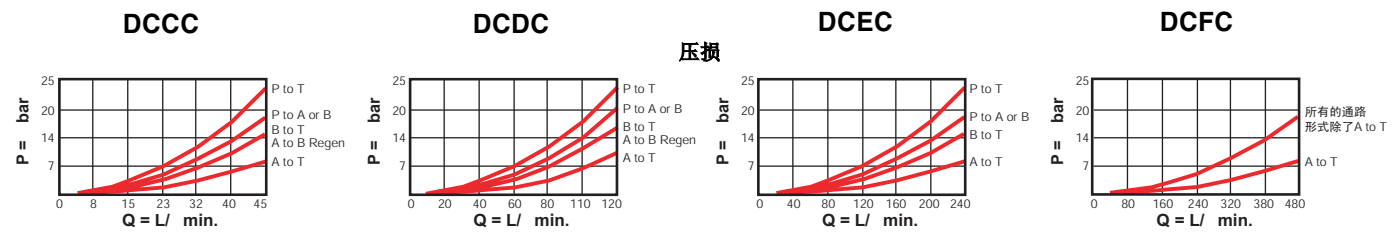
方向阀

导压操作方向阀，3位4口



流量	(代表) 插式阀 型号	插孔	插式阀尺寸			安装 扭矩 (Nm)
			a	b	c	
40 L/min.	DCCC - XCN	T - 61A	84,8	22,2	50	40/50
80 L/min.	DCDC - XCN	T - 62A	92,2	28,6	59	60/70
160 L/min.	DCEC - XCN	T - 63A	114,4	31,8	73	200/215
320 L/min.	DCFC - XCN	T - 64A	139,7	41,3	92	465/500

性能曲线



- 最大工作压力 = 350 bar
- 最大内漏量 = 2 in³/min. @ 1000 psi
- 完全切换时导压容积 = DCCC: 0,33 cc/min., DCDC: 0,98 cc/min., DCEC: 2,8 cc/min., DCFC: 6,9 cc/min.
- 切换时最小导压力 = DCCC: 12 bar, DCDC: 10,5 bar, DCEC, DCFC: 9 bar
- 所有油口可耐压 350 bar, 包括导压口 x 和 y

选购规格

DC * C - X * *

流量	滑柱型式 流量 (L/min.)				油封	
	C	D	E	F		
C 40 L/min.		95,0	189,0	378,0	756,0	N Buna-N V Viton
D 80 L/min.		38,0	91,0	151,0	378,0	
E 160 L/min.		38,0	95,0	151,0	378,0	N Buna-N V Viton
F 320 L/min.		38,0	189,0	378,0	756,0	
		45,0	189,0	378,0	756,0	
		27,0	42,0	95,0	189,0	
		27,0	45,0	95,0	189,0	
		27,0	57,0	113,0	227,0	
		38,0	189,0	284,0	567,0	
		38,0	---	284,0	---	

方向阀切换时 5 口和 6 口的压力差通常为 14bar